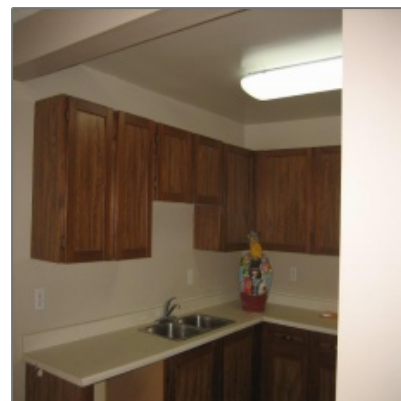
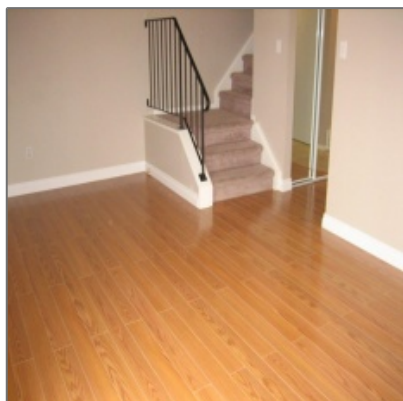


Crisp Clean Renovated Family Townhome in Castle Downs

1,120 Sqft - 16429 115 ST NW, EDMONTON AB, T5X 5E8



Property Description

Clean | Safe | Affordable

You'll love living in Dunluce Village. This 3 bedroom townhouse has over 1120 square feet of living space, plus a wide open basement.

There's plenty of space to entertain family and friends in your living room on gleaming new laminate flooring, or in your private fenced yard backing onto a greenbelt. The family-sized kitchen comes equipped with FRIDGE, STOVE, and built-in DISHWASHER. And you'll enjoy the convenience of a main floor Powder Room.

Your second story sleeping area features 3 good-sized carpeted bedrooms and a full bathroom. Window-coverings are included, as are upgraded fixtures and warm paint tones with feature walls.

Downstairs you'll find a laundry area with WASHER & DRYER, and plenty of very clean, wide-open storage space. For those who like to be both cozy and cost-conscious, this home comes complete with brand new high-efficiency furnace and hot water heater. Newer windows and roof also help keep your home warm in winter and cool in summer.

Just outside your front door is a powered parking

Details

Property Title: **Crisp Clean Renovated Family Townhome in Castle Downs**

Property Type: **Town House**

Community: **Dunluce**

Price: **\$1395**

Bedrooms: **3**

Bathrooms: **2**

Square Footage: **1,120 Sqft**

Call: **780-244-8001**

stall.

Dunluce Village is a condominium community just a short walk to schools, parks, playgrounds, shopping, church, and bus service.

CALL TODAY TO VIEW

Small pets welcome, subject to Approval and \$35/month Pet Fee

Tenant pays utilities

No smoking in this impeccable home

Ask about Early Move-in Allowance

Owner [Info](#)



Jeff Gunther

📞 780-244-8001

✉ info@jeffgunther.ca